



WiredContact Enterprise

Installation guide for Windows server 2008

For support:

United Kingdom: support@wiredcontact.co.uk

France: support@wiredcontact.fr

Germany: support@wiredcontact.de

India: support@wiredcontact.in

Australia: support@wiredcontact.com.au

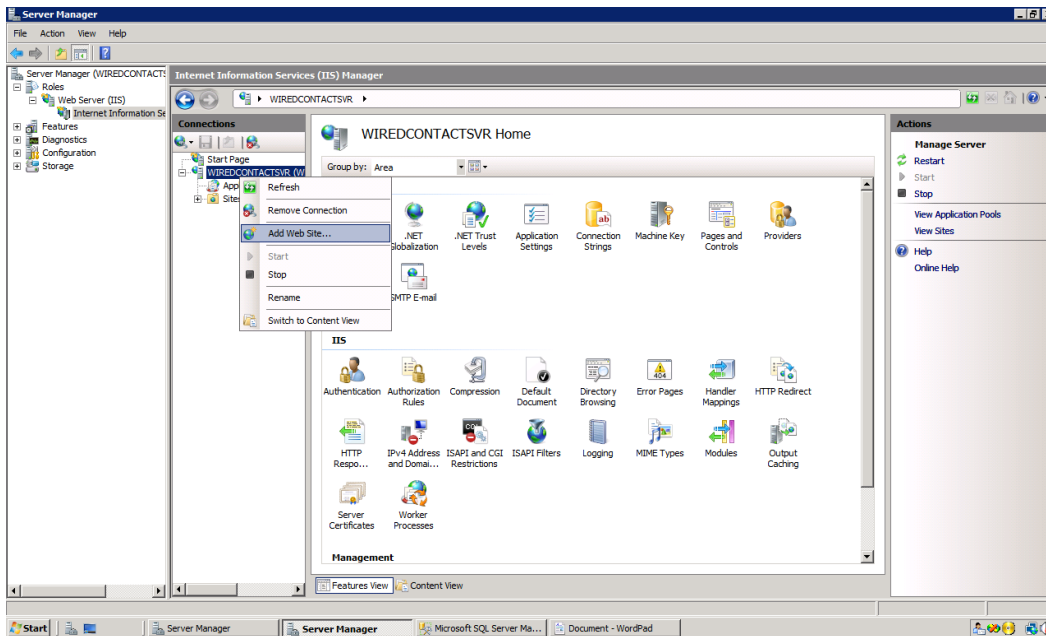
USA: support@wiredcontact.com

Tel UK +44 (0) 208 099 3032

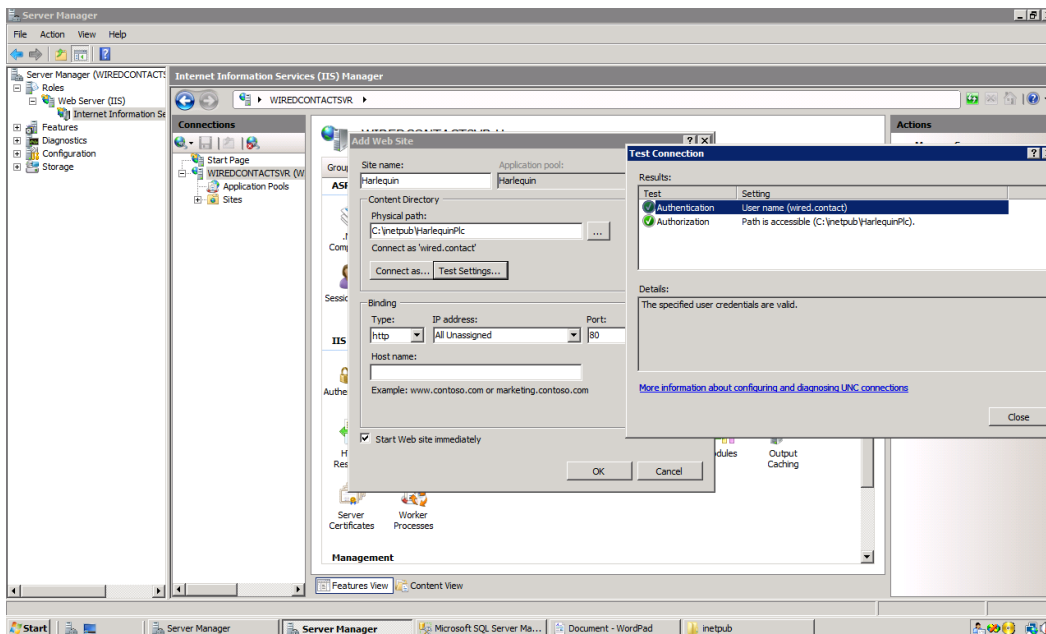
USA +1 215 641 8585

You need to log on to the server as full Administrator to set WiredContact up create an IUSER with full Administrator permissions.

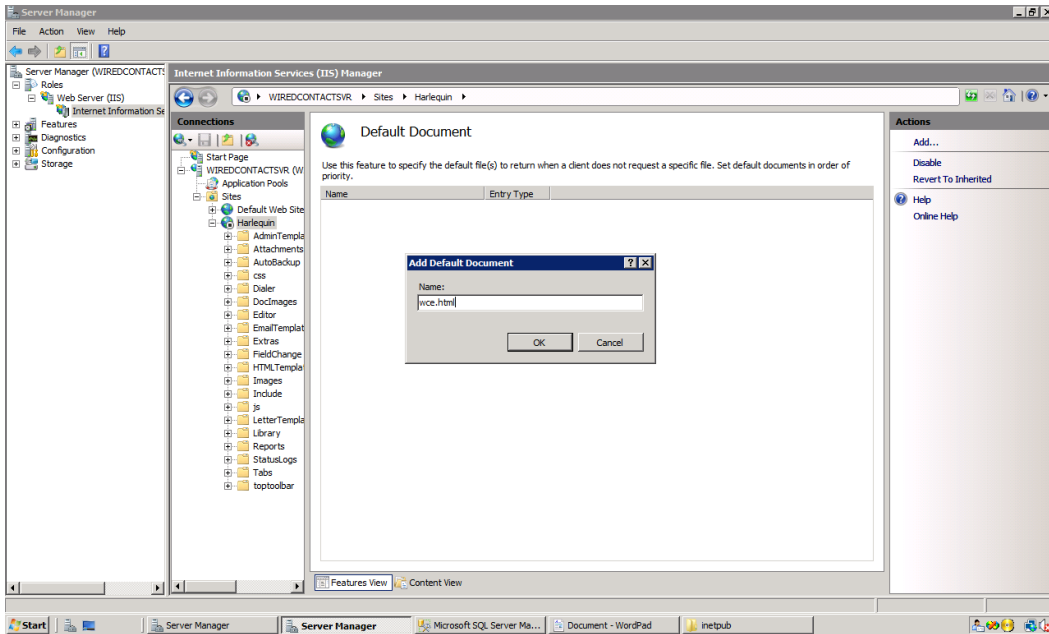
Create New Website in IIS 7



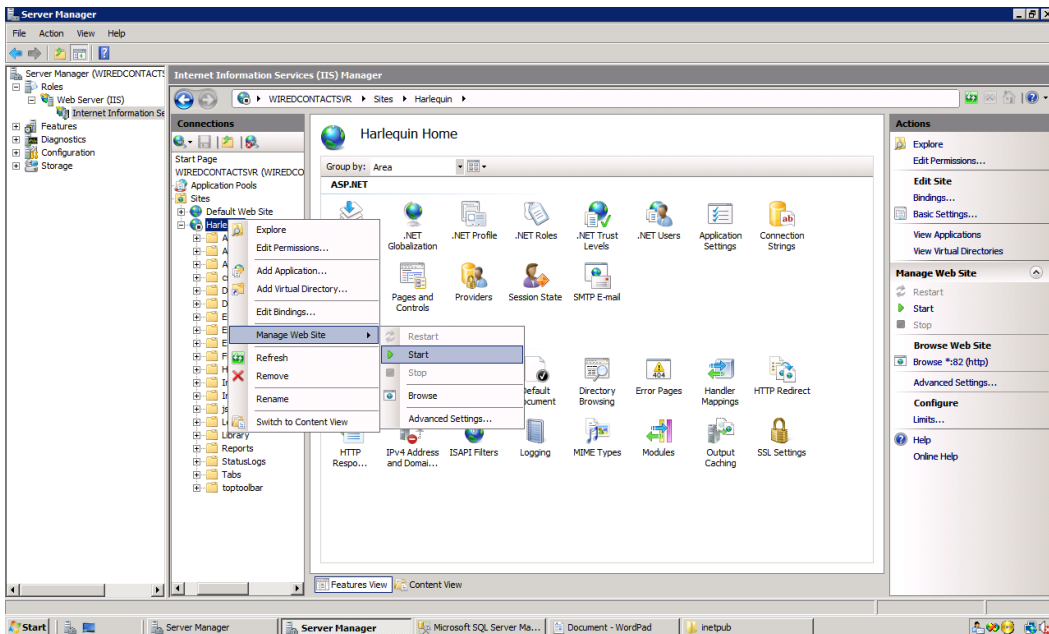
When prompted give your website a name and point to its location. Set the IUSER as the “user” you create and apply the password and test the connection.



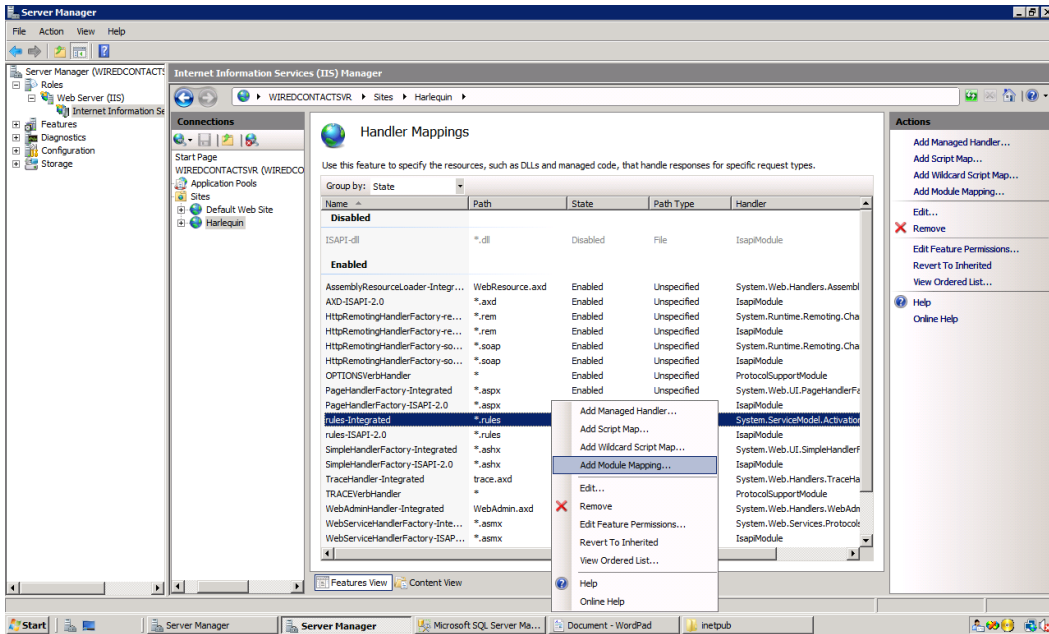
In the web site settings pane select the **Default Document** remove all the default pages and add one own called **wce.html** and click ok.



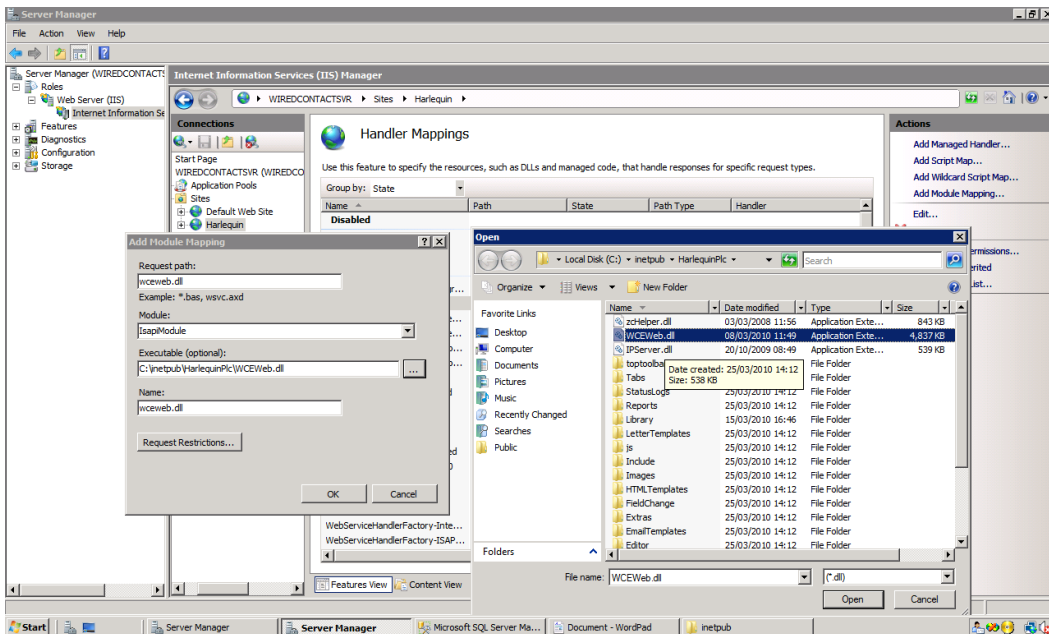
Make sure your web site is running. If not, right click on the web site, select manage web site then select start from the sub menu.



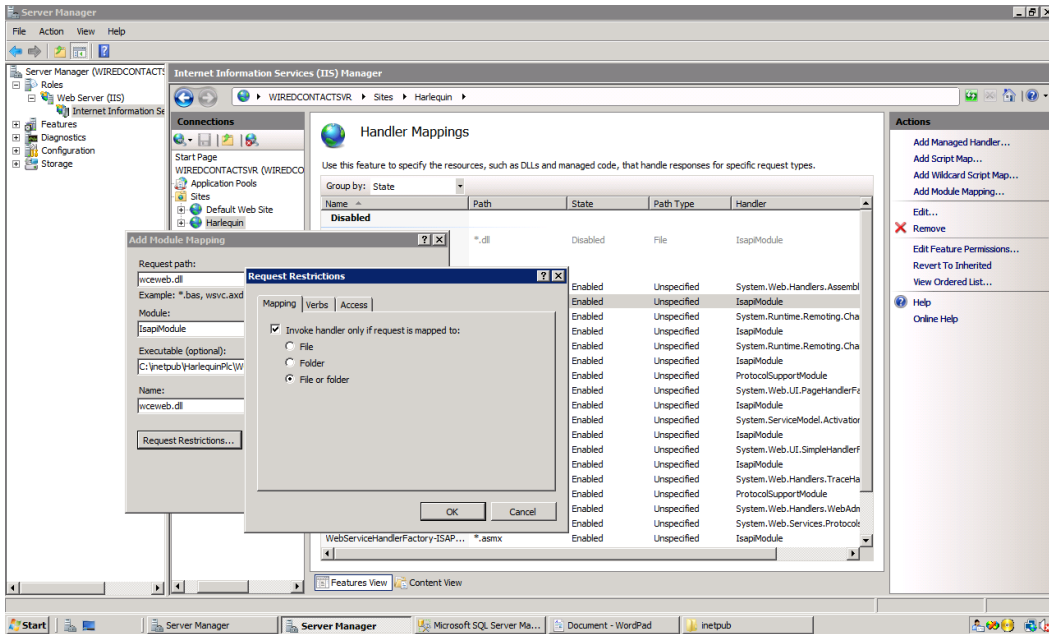
In the web site settings pane click **Handler Mappings** when the following screen appears right click in the centre of the page and select **Add Module Mapping...**



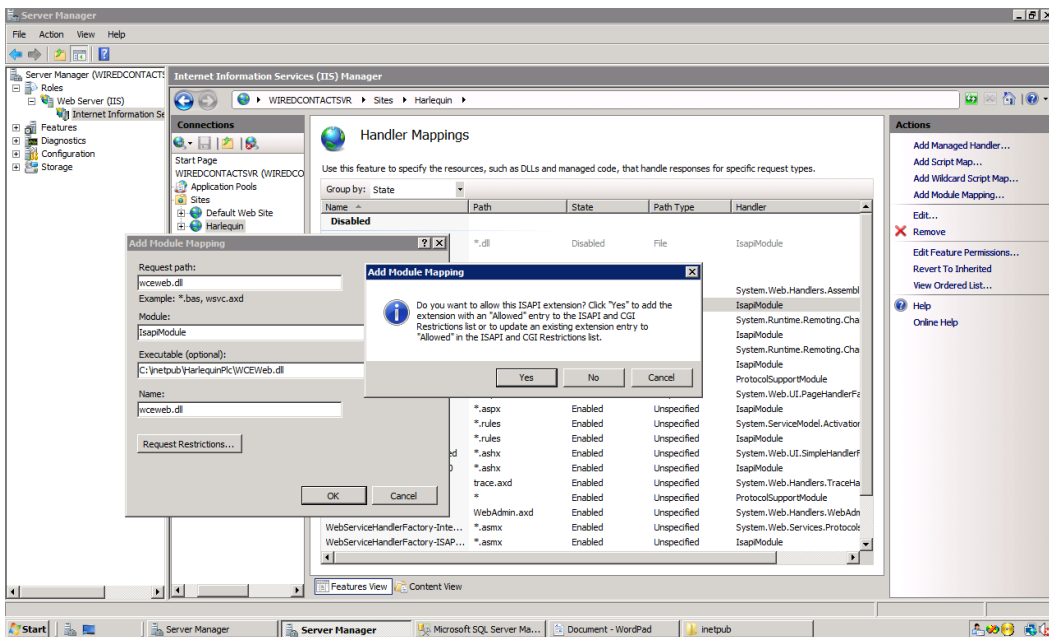
You will now be prompted to **Add Module Mapping**. Populate the fields as below. The wceweb.dll file is located where you installed the WiredContact directory.



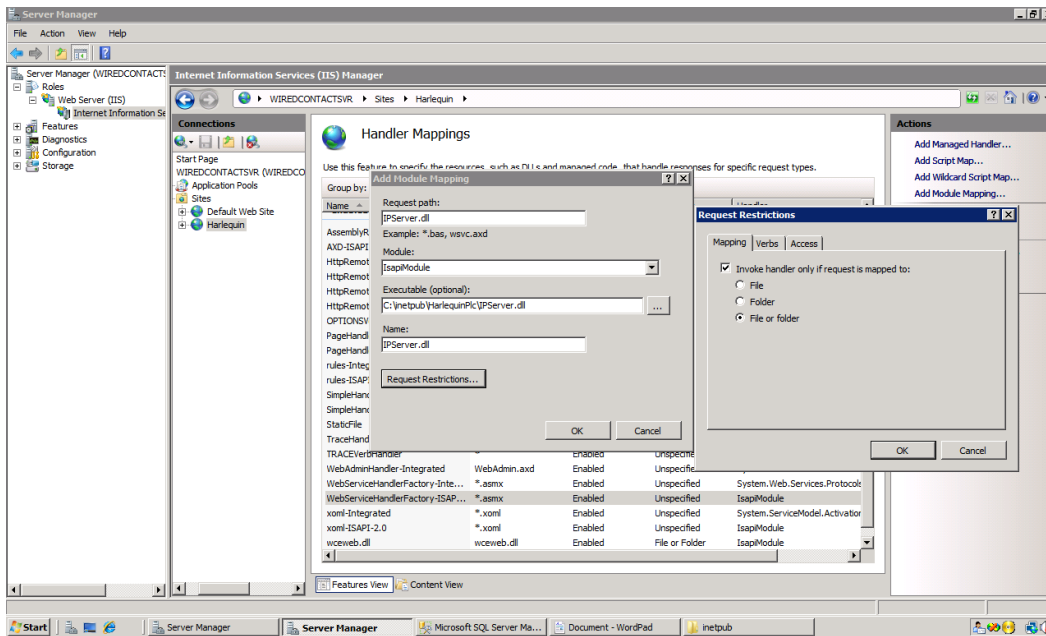
Click the **Request Restrictions** button and tick the **Invoke handler** check box and select the file and folder radio button below the checkbox you ticked.



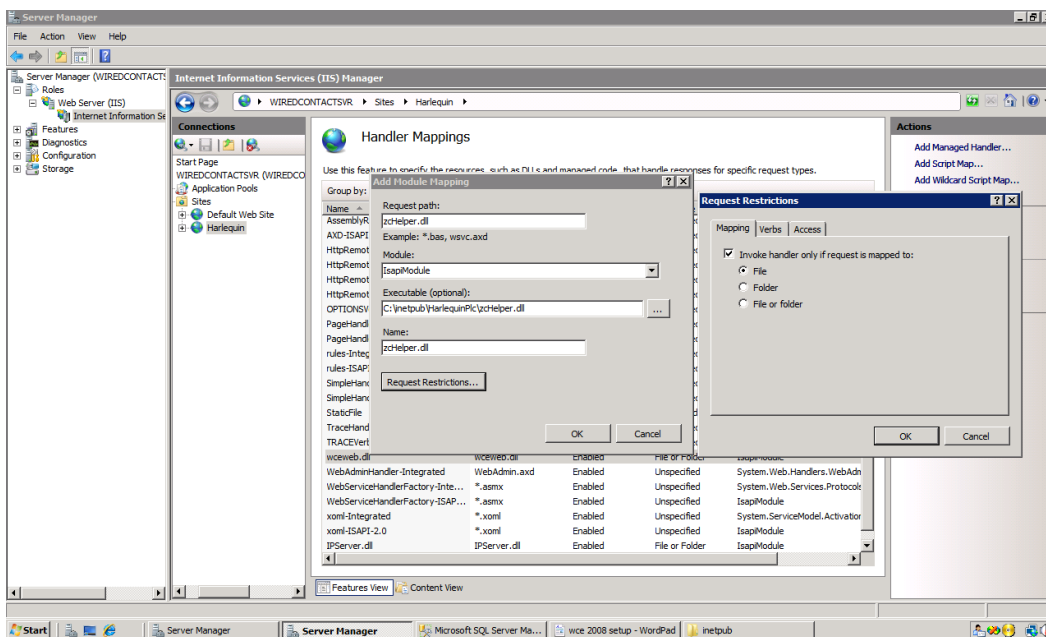
You will be prompted for **Do you want to allow...** For this click the **Yes** button.



Do exactly the same as the three stage you used for the **wceweb.dll** for the **IPServer.dll**

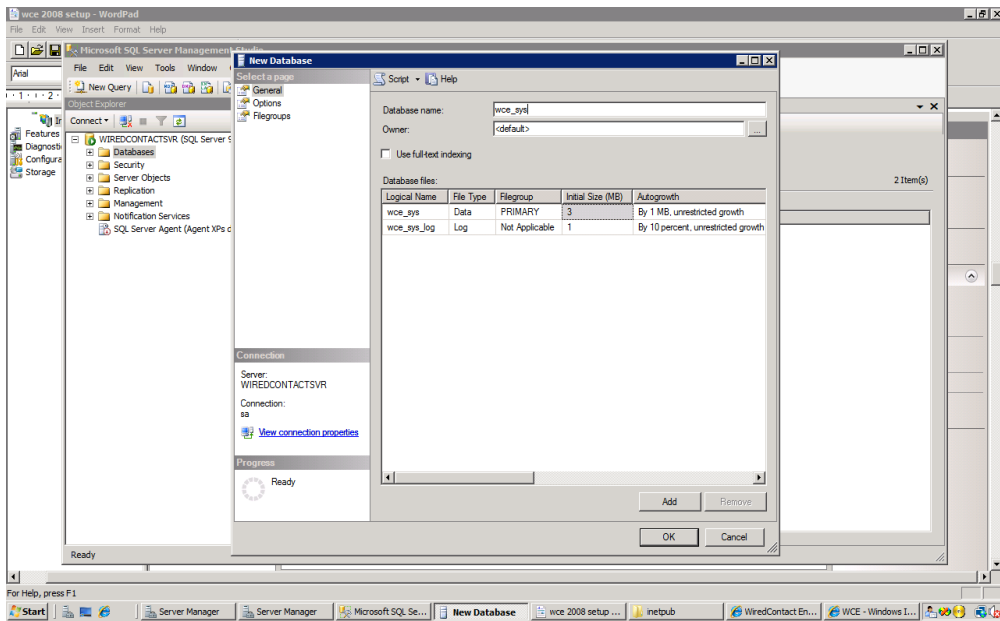


Do exactly the same as the three stage you used for the **wcweb.dll** and **IPServer.dll** for the **zcHelper.dll**



Finally or before setting up your website create the two databases to hold the system data and the contact data.

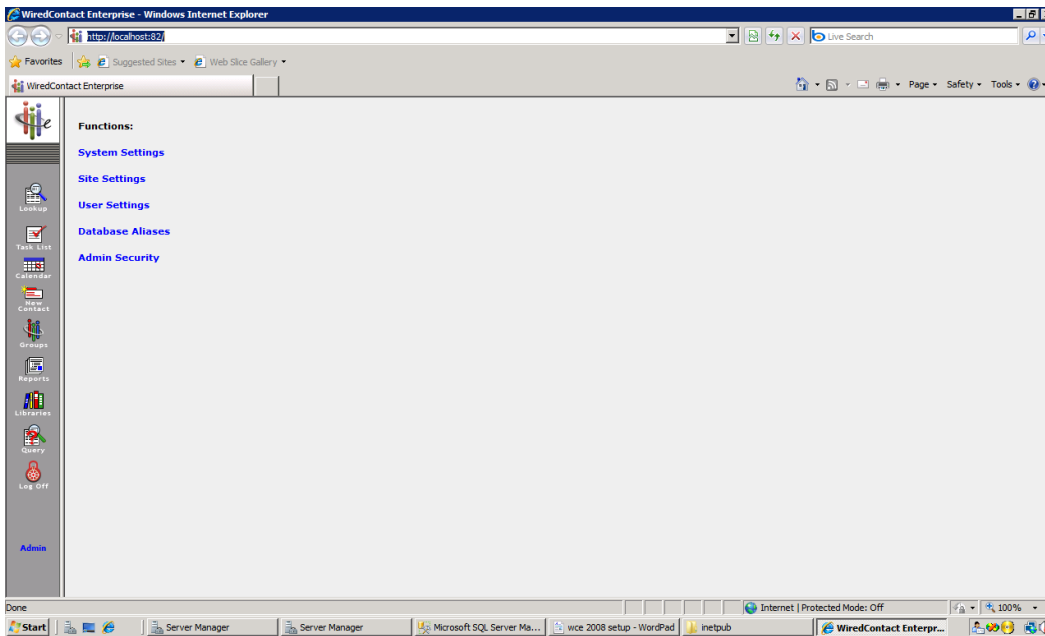
First open MS SQL Management Studio, right click on Databases in the left pane and create the **wce_sys** database (This name can be anything but it is best to name it something logical as it makes support easier)



Now do the same as above for the wce_site database



Once those are created, open your web browser enter the address of your newly created website, in this instance we used port 82. So <http://localhost:82> will open the site on the server.



Here we create our system and site aliases which will connect our WiredContact site to the SQL databases.

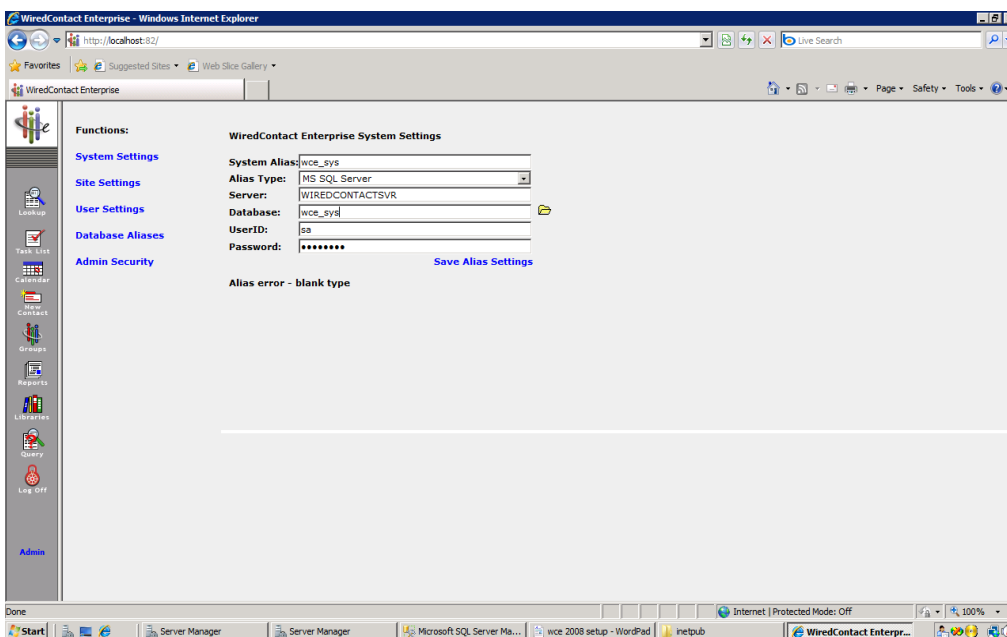
First click System settings

I used wce_sys as my system alias so that it tied up with my database name. Then select the alias type, in this instance we are using MS SQL Server.

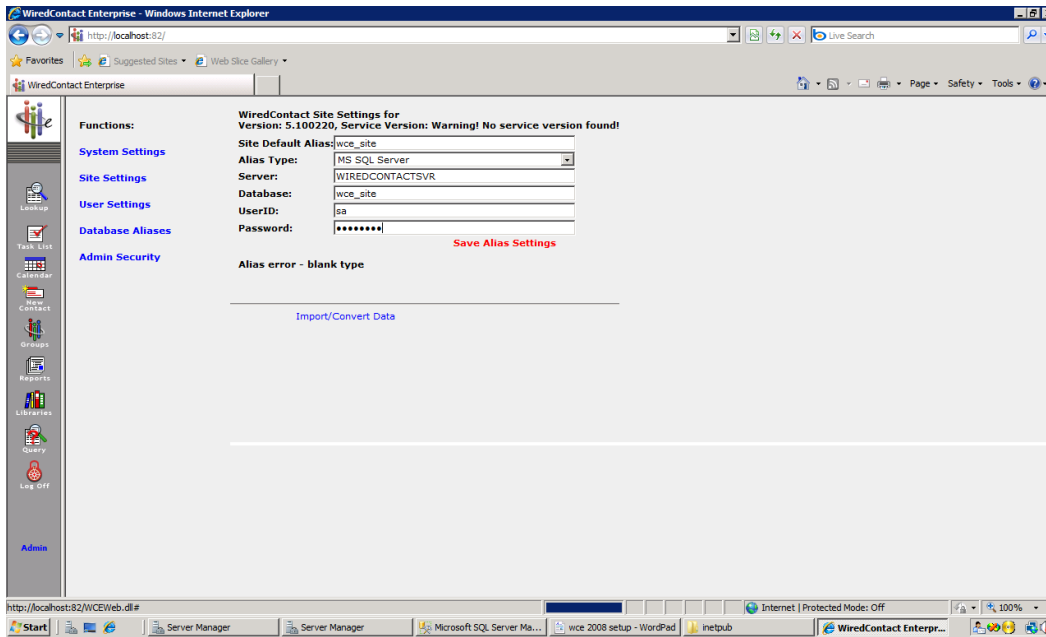
In the Server field enter the instance name of your SQL Server, this can be found in SQL Management Studio before logging in or on the intro page when logged in.

In the Database field you can input your database name for the system database or click the folder at the end and browse to it.

Finally enter the SQL username and password. If the SA account was not set up these can be left blank.



Now click Site Settings and do the same as above but now you will create a wce_site alias and reference the wce_site database



Last but not least. Go in to your WiredContact root directory C:\inetpub\WiredE and run the **Install WiredContact Service.bat** batch file to install the service. This can also be done at the begin of the WiredContact setup process.

